



Celerity Drafting Solutions LLC

4174 West Gary Drive Chandler, AZ. 85226

602-689-0087 Mobile 480-777-5791 FAX

www.celerityaz.com

CAD@celerityaz.com

Dear Shop Owner,

Construction schedules today often allow relatively little time for submittals. General contractors may ask you to commit to a submittal date almost as soon as they draw up a letter of intent.

You know that good drawings take time to produce, but contractors can be very unsympathetic to that fact, especially once a submittal date has been set.

To further aggravate things, even a well staffed in-house engineering department can be overwhelmed at times due to the cyclical nature of our industry.

It is with that in mind that I offer my services to shops like yours. With over 35 years experience in the millwork industry spanning every aspect of the trade, I believe that I can help you with any overflow work you may have.

Why Outsource?

Outsourcing has many advantages. Here are four of them.

Money: A full time, professional staff is not cheap. Qualified draftsmen may expect anywhere from 35K to 55K a year plus benefits. When you have more work than your existing staff can do, but not quite enough to justify hiring another full time employee, outsourcing can be a very cost-effective solution.

Security: Outsourcing by its very nature provides you with a free off-site backup of your drawings, manufacturing libraries and related files. By giving you access to my servers, I can make this archive available to you 24/7. All you need is an internet connection.

Equipment: There is a sizeable time investment in maintaining plotters, printers, copy machines, binding equipment, servers and workstations that goes far beyond just the ink, paper and electricity to run them. When you outsource with me, that headache is my problem, not yours.

Technical Expertise: Have you recently purchased a CNC or are you in the process of setting up manufacturing software like Microvellum for the first time? How does this affect the drafting environment? I have experience in all these areas. Let me put it to work for you.

Why Outsource With CDS?

Why outsource with CDS? –Because no one is going to take a more personal interest in your project than I will.

The millwork business is my life. I've spent many years on the bench; worked as an estimator, a project manager, a draftsman, and eventually supervised an entire engineering department for one of the larger shops in the Southwestern U.S.

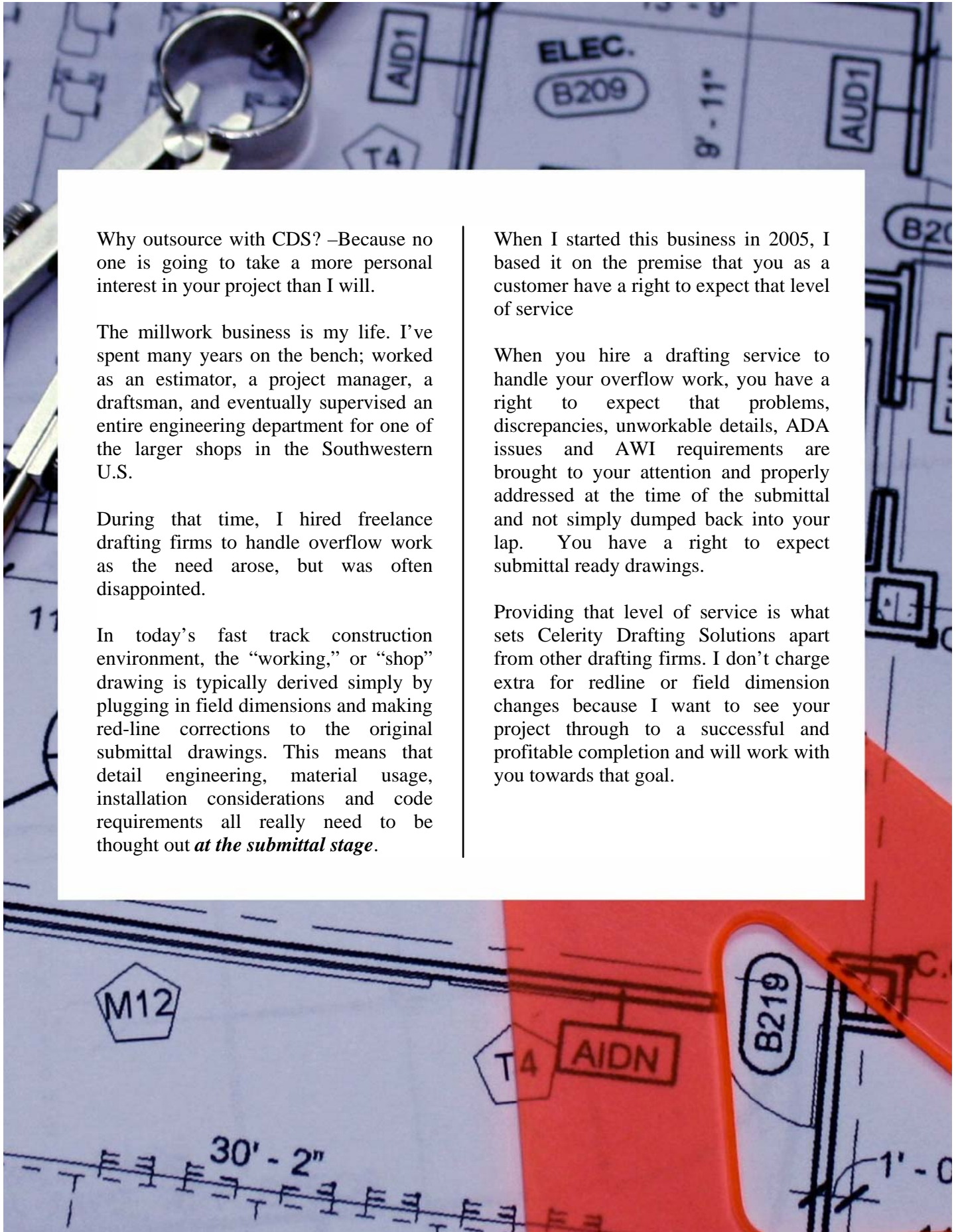
During that time, I hired freelance drafting firms to handle overflow work as the need arose, but was often disappointed.

In today's fast track construction environment, the "working," or "shop" drawing is typically derived simply by plugging in field dimensions and making red-line corrections to the original submittal drawings. This means that detail engineering, material usage, installation considerations and code requirements all really need to be thought out *at the submittal stage*.

When I started this business in 2005, I based it on the premise that you as a customer have a right to expect that level of service

When you hire a drafting service to handle your overflow work, you have a right to expect that problems, discrepancies, unworkable details, ADA issues and AWI requirements are brought to your attention and properly addressed at the time of the submittal and not simply dumped back into your lap. You have a right to expect submittal ready drawings.

Providing that level of service is what sets Celerity Drafting Solutions apart from other drafting firms. I don't charge extra for redline or field dimension changes because I want to see your project through to a successful and profitable completion and will work with you towards that goal.



Services

Professional Shop Drawings

We provide an unmatched level of service in providing working, shop friendly drawings. Your existing format, style, and presentation on both paper *and* model space will be matched exactly



CAM Services

If you own a flat-table or point-to-point machining center, our drawings can be specifically tailored to make the lives of your programmer and operator easier. We can provide all necessary DXF files for odd shaped and one-of-a-kind parts. We can even provide the G-code on select machines



Cut Listing & Material Takeoff

As millworkers and sawmen ourselves, we offer these services to established customers at reasonable rates



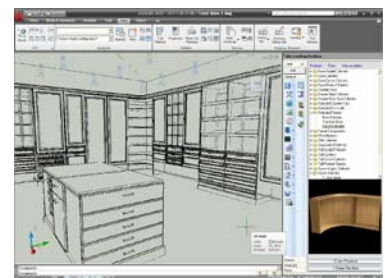
Renderings

We can provide full 3D renderings of any complicated fixture. Although renderings are seldom, if ever needed by qualified shop personnel, they can greatly enhance the quality of your presentation to designers, especially with pieces that don't "show" well in an architectural drawing format



Microvellum Library Development

A wide range of custom products for the Microvellum® environment are available.* These are not clumsy one-offs; they are fully functional self-contained products that require no changes to your subassembly or global files. Special requests can be quickly developed to your specification



*Customer must own Microvellum®

Fast Updates

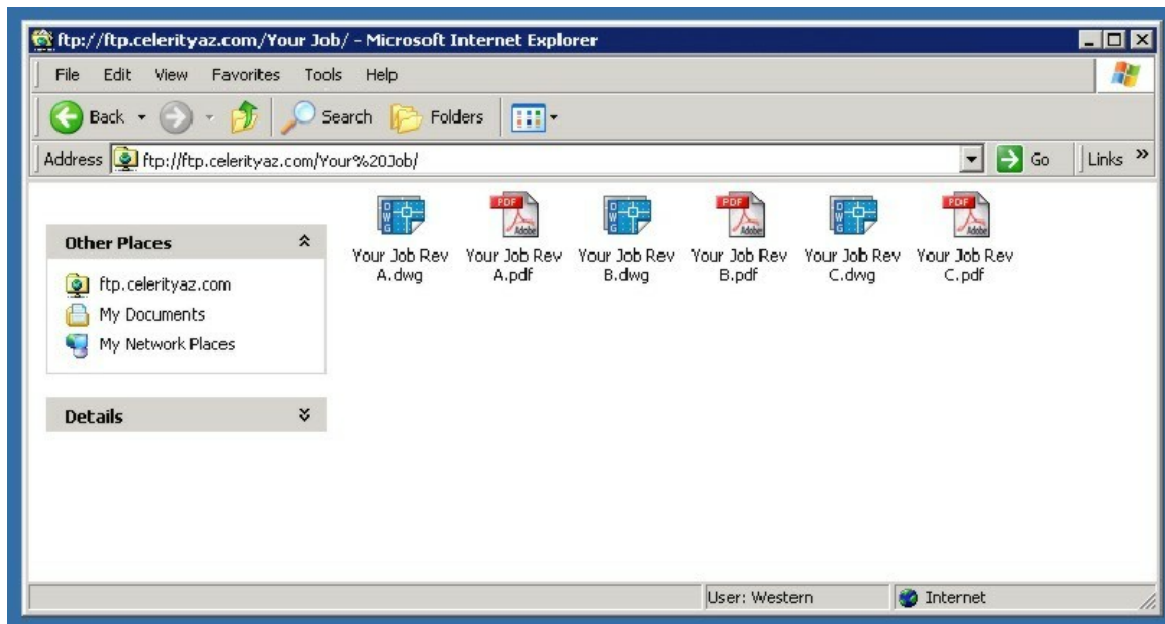
Last minute changes and revisions are not a problem. I can make them available to you quickly and easily.

Every customer has their own private FTP site. Revisions are available for download in a variety of easy to print formats.

The revised drawing(s) can be downloaded using any Windows version. (Tech support is always free.)

To see for yourself how this would work, go to:

<http://sample.celerityaz.com>



Drawings Tailored to Your Needs

Every shop has their own individual preferences and needs when it comes to how they expect a drawing to look.

Some shops need highly detailed sections with every feature explicitly called out, while others have such a clearly defined product line that this would clutter the drawing.

Some shops want to see complete floor plans. Others only need partial floor

plans, when and if they even need them at all.

Therefore, although I've included sample drawings, it's not my intention to try and sell you on a particular presentation style that I happen to be comfortable with.

First and foremost, I want to produce drawings that appear the way YOU want to see them --as close as possible to what your own in-house staff would produce.

Celerity Drafting Solutions LLC



Microvellum® Drafting Service Provider



AWI Affiliate Member

